

Junior & Cadet  
Fencing World Championships

Belfast

4<sup>th</sup> – 13<sup>th</sup> April 2009



**Dear FIE President, Presidents of National Federations, Young Fencers of the World,**

It is my absolute pleasure to invite you all to participate in the Junior & Cadet Fencing World Championships 2009, which will be held in Belfast, Northern Ireland. British Fencing wants these World Championships to be a great success and we are at your disposition to answer any questions concerning travel and accommodation that you might have as well as all other aspects of the event.

We have appointed Sportworks UK as our event management partners. Sportworks UK will be responsible for managing and coordinating all aspects of the event, including those relating to, transport and accommodation, and so any enquiries should be directed to the following:

Sportworks UK  
Unit 18  
Molyneux Business Park  
Whitworth Road  
Darley Dale  
Matlock  
Derbyshire  
DE4 2HJ  
UK

Your main contact at Sportworks UK is Tom Wenham. Tom can be contacted by email at [tom@sportworksuk.com](mailto:tom@sportworksuk.com), or by mobile telephone on 0044 (0) 7800 537724, or by landline on 0044 (0) 1629 706579. Tom's fax number is 0044 (0) 1629 734893. For information relating to transport and accommodation your contact at Sportworks UK is Stephen Minto. Stephen can be contacted at [stephen@sportworksuk.com](mailto:stephen@sportworksuk.com), by mobile telephone at 0044 (0) 7958 358130 or by calling 0044 (0) 1629 706579. Alternatively Stephen can be contacted by fax at 0044 (0) 1629 734893. Only contact Stephen for information relating to transport and accommodation.

Please ensure you book your accommodation and transport through Sportworks UK so that your arrival and departure to and from Belfast can be coordinated collectively and so that you have access to the transport system that will operate daily between your chosen hotel and the Championships venue. Anyone thinking about making their own arrangements should be aware that transport will only be running from the hotels listed below and that your eligibility to travel on transport from these hotels is determined by booking through Sportworks UK.

The City Of Belfast, the Department of Culture, Arts and Leisure (Northern Ireland) and UK Sport are all supporting this prestigious competition as we start a new Olympiad that will culminate with the Olympic Games 2012 in London. We thank them all for their support.

I look forward to welcoming you all to Belfast in April 2009.

Yours sincerely,

Keith A Smith

President  
British Fencing Association

## **Key Contacts**

If you have an enquiry relating to the event then here are your key contacts:

General Enquiries	Tom Wenham	<a href="mailto:tom@sportworksuk.com">tom@sportworksuk.com</a>
Fencing Specific	Jon Milner	<a href="mailto:jonmilner@blueyonder.co.uk">jonmilner@blueyonder.co.uk</a>
Transport & Accommodation	Stephen Minto	<a href="mailto:stephen@sportworksuk.com">stephen@sportworksuk.com</a>
Medical Coordinator	Clare Halsted	<a href="mailto:clarehalsted@blueyonder.co.uk">clarehalsted@blueyonder.co.uk</a>
Volunteering	Ian Sneddon	<a href="mailto:ian_sneddon@mpl.com">ian_sneddon@mpl.com</a>
Media & Marketing	Tom Wenham	<a href="mailto:tom@sportworksuk.com">tom@sportworksuk.com</a>
Spectator Services	Tom Wenham	<a href="mailto:tom@sportworksuk.com">tom@sportworksuk.com</a>
Exhibitors	Tom Wenham	<a href="mailto:tom@sportworksuk.com">tom@sportworksuk.com</a>
Sponsorship	Tom Wenham	<a href="mailto:tom@sportworksuk.com">tom@sportworksuk.com</a>

## **Why Northern Ireland?**

Northern Ireland is an integral part of British Fencing and is eager to play its part in promoting our sport. The Department of Culture and Leisure are very excited about our event and have contributed significant funds to enable the event to take place in Belfast. We also have the support of BCC and Northern Ireland Fencing Union as the IFU. Belfast's determination and support is driven by its desire to have an Olympic Sport in its City and the City is looking forward to welcoming you all to Belfast.

## **Why Belfast?**

The fortunes of Belfast have risen and fallen over time, from its beginnings as a Bronze Age settlement and the building of the Titanic, to extensive World War II bombings and civil conflict. Today the capital of Northern Ireland is a thriving city that has regained much of its old charm and industry, and has begun to lure the curious traveller.

Belfast is situated near the mouth of the River Lagan and blossomed in the 17th century with an influx of English and Scottish settlers. The port city grew in prominence during the Industrial Revolution, with booming linen, rope-making and shipbuilding industries. The ill-fated Titanic was built here in the Harland and Wolff shipyards and today Belfast still boasts the world's biggest dry dock, as well as a restored Waterfront Complex that houses chic restaurants, shops and ubiquitous Irish pubs.

Much of the city's architectural heritage was destroyed during repeated bombings in World War II, as well as during the Troubles; civil conflict between Roman Catholic nationalists and Protestant unionists that raged from 1969 until the late 1990s. Several exquisite Victorian and Edwardian buildings remain however, and have been filled with trendy bars, boutiques, galleries, museums and restaurants in an attempt to regenerate the city's image.

Belfast is often overlooked as a tourist destination, but its fascinating history, many attractions and above all, the warmth and acerbic wit of its inhabitants make it an essential stop on any trip to Northern Ireland. It also serves as an excellent base from which to explore the many wonders of the area.

## **The Venue**

University of Ulster – Jordanstown Campus



The Jordanstown campus is located a few miles north of Belfast on the shore of Belfast Lough. It is a large complex of modern and seventies buildings with views of the Belfast Hills, the Mourne Mountains and County Down. Historic Carrickfergus, with its 12th century castle, harbour and modern marina is a few miles along the Lough. The proximity of the campus to Belfast is a major attraction for students who often chose to live in the city and travel to the campus on the excellent

rail, bus and taxi links. The Jordanstown campus is home to the Sports Institute for Northern Ireland and has excellent facilities for recreational and more serious sporting activities. Modern fitness facilities include squash courts, sports halls and a large fitness suite.

The £6.7 million Learning Resource Centre was recently opened offering hi-tech learning and studying facilities.

The campus is designed around a central Mall, which is a spine for the 17 blocks of academic, study and recreational facilities. The campus is a friendly environment with plenty of cafes, sandwich bars and restaurants at which to meet and relax with friends. There are two banks, a bookshop, a variety of catering facilities, as well as the Students' Union, sports centre, and chaplains' office. There is on-campus accommodation and nearby halls and private accommodation. There are local amenities and bars for those who choose to live in halls.

The website address is: <http://www.ulster.ac.uk/campus/jordanstown/>

**Provisional Programme (subject to FIE approval)**

THUR 02ND	OFFICIAL ARRIVAL DAY	
FRI 03RD	OFFICIAL ARRIVAL DAY	
SAT 04TH	09:00: SEMINARS AND MEETING OF THE REFEREES 11:00: MEETING OF THE DIRECTORIE TECHNIQUE 14:00: GENERAL ASSEMBLY AND CALENDAR MEETING	
SUN 05TH	CADET INDIVIDUAL MEN'S SABRE CADET INDIVIDUAL WOMEN'S FOIL OPENING CEREMONY CADET INDIVIDUAL MEN'S SABRE CADET INDIVIDUAL WOMEN'S FOIL	POOLS AND DIRECT ELIMINATION POOLS AND DIRECT ELIMINATION  FINAL FINAL
MON 06TH	CADET INDIVIDUAL WOMEN'S SABRE CADET INDIVIDUAL MEN'S EPEE CADET INDIVIDUAL WOMEN'S SABRE CADET INDIVIDUAL MEN'S EPEE	POOLS AND DIRECT ELIMINATION POOLS AND DIRECT ELIMINATION FINAL FINAL
TUES 07TH	CADET INDIVIDUAL MEN'S FOIL CADET INDIVIDUAL WOMEN'S EPEE CADET INDIVIDUAL MEN'S FOIL CADET INDIVIDUAL WOMEN'S EPEE	POOLS AND DIRECT ELIMINATION POOLS AND DIRECT ELIMINATION FINAL FINAL
WED 08TH	JUNIOR INDIVIDUAL MEN'S SABRE JUNIOR INDIVIDUAL WOMEN'S FOIL JUNIOR INDIVIDUAL MEN'S SABRE JUNIOR INDIVIDUAL WOMEN'S FOIL	POOLS AND DIRECT ELIMINATION POOLS AND DIRECT ELIMINATION FINAL FINAL
THURS 09TH	JUNIOR INDIVIDUAL WOMEN'S SABRE JUNIOR INDIVIDUAL MEN'S EPEE JUNIOR INDIVIDUAL WOMEN'S SABRE JUNIOR INDIVIDUAL MEN'S EPEE	POOLS AND DIRECT ELIMINATION POOLS AND DIRECT ELIMINATION FINAL FINAL
FRI 10TH	JUNIOR INDIVIDUAL MEN'S FOIL JUNIOR INDIVIDUAL WOMEN'S EPEE JUNIOR INDIVIDUAL MEN'S FOIL JUNIOR INDIVIDUAL WOMEN'S EPEE	POOLS AND DIRECT ELIMINATION POOLS AND DIRECT ELIMINATION FINAL FINAL
SAT 11TH	TEAM MEN'S SABRE TEAM WOMEN'S FOIL TEAM MEN'S SABRE TEAM WOMEN'S FOIL	DIRECT ELIMINATION DIRECT ELIMINATION 3RD PLACE & FINAL 3RD PLACE & FINAL
SUN 12TH	TEAM WOMEN'S SABRE TEAM MEN'S EPEE TEAM WOMEN'S SABRE TEAM MEN'S EPEE	DIRECT ELIMINATION DIRECT ELIMINATION 3RD PLACE & FINAL 3RD PLACE & FINAL
MON 13TH	TEAM MEN'S FOIL TEAM WOMEN'S EPEE TEAM MEN'S FOIL TEAM WOMEN'S EPEE CLOSING CEREMONY	DIRECT ELIMINATION DIRECT ELIMINATION 3RD PLACE & FINAL 3RD PLACE & FINAL
TUES 14TH	OFFICIAL DEPARTURE DAY	

## **Registration**

In accordance with the FIE rules and regulations of a World Championships, your countries intention to participate must be received by the Organising Committee (OC) at least 2 months prior to the start of the tournament. The 2009 Cadet and Junior World Championships is scheduled to commence on the 04th April so preliminary entries must be notified (using the forms attached) and received by the OC no later than February 04th 2009. Entries are not allowed after the 04th March 2009.

Your commitment to participate will be taken as confirmed upon receipt of forms below, duly completed. The entry of fencers and teams by name is to be made via the FIE Website – [www.fie.ch](http://www.fie.ch).

The entry of fencers and teams by name is to be made via the FIE website. This entry of the names of the fencers and all possible substitutes, and the entry of teams, must be made fifteen days before the first event of the Championships at the latest. After the cut-off date for entries indicated on the FIE website, there can be no further additional entries nor any withdrawal of a name. Nevertheless one or more fencers may be added, up until 10.00am on the day before the competition, after payment to the FIE of a fine of 150 Euros per fencer added. To do this the National Federation must address a request to the FIE to add a fencer, together with the payment equivalent to the fine. Changes of names, only with the agreement of the FIE and only for reasons of 'force majeure' or injury, can only be made up to 24 hours before each event.

# Participation Commitment of Officials and Accompanying Persons

Junior & Cadet Fencing World Championships 2009

04<sup>th</sup> April – 13<sup>th</sup> April 2009

University of Ulster, Belfast, Northern Ireland, United Kingdom

Please send this form to Tom Wenham using the following options: By Post; Sportworks UK, Unit 18, Molyneux Business Park, Whitworth Road, Darley Dale, Matlock, Derbyshire, DE4 2HJ, United Kingdom; By Fax: 0044 (0) 1629 734893 or by email at [tom@sportworksuk.com](mailto:tom@sportworksuk.com).

This form must be received at the office above no later than 2 months prior to the commencement of the 2009 championships (04<sup>th</sup> February 2009).

**THE FEDERATION:**

Enters the following persons

at the above-mentioned Championships.

**\*IMPORTANT NOTE FOR THE GOOD PRESENTATION OF THIS DOCUMENT\***

- where possible, type the names and first names.
- family name will always precede the first name.
- enclose to this document the photography (format 4.5 cm X 5 cm) of each of the participants while noting the names and first names at the back of each photograph.
- announce the possible presence of the President of your National Federation by specifying his name and first name.

<b>HEAD OF DELEGATION:</b>		
FAMILY NAME	First Name	Function in Federation

<b>OFFICIALS:</b>		
FAMILY NAME	First Name	Function in Federation

<b>TRAINERS:</b>		<b>ACCOMPANYING PERSONS:</b>	
FAMILY NAME	First Name	FAMILY NAME	First Name

\*Use additional forms if required

DATED: .....

SIGNATURE AND SEAL: .....



## Travel Options

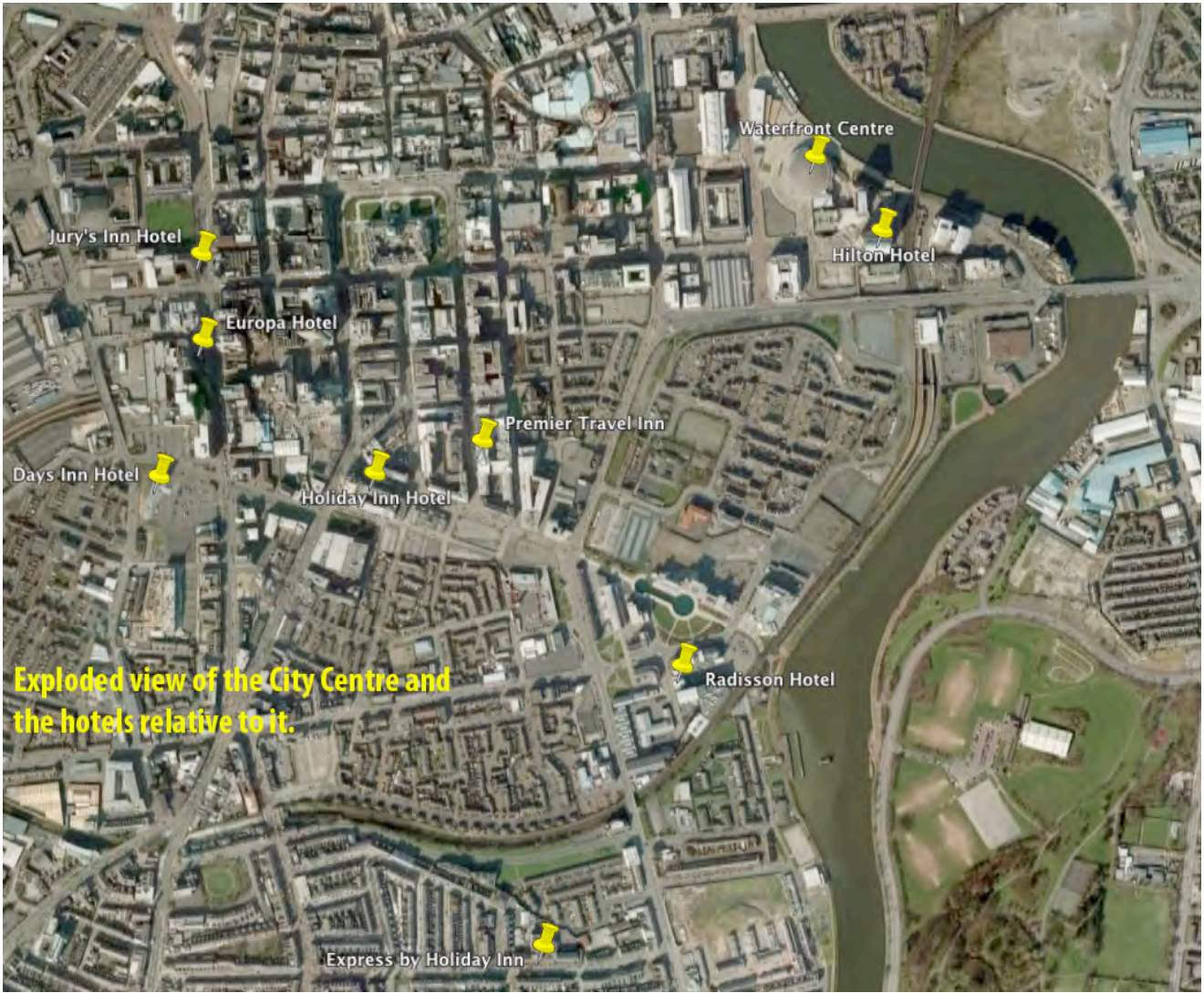
The official Airport for the Championships is Belfast International Airport (BFS). Direct scheduled flights are available from 29 international destinations including Amsterdam with KLM Royal Dutch Airlines, New York Newark Airport with Continental Airlines and London Heathrow Airport with BMI British Midland. BMI British Midland are members of the Star Alliance, so Belfast International Airport is easily accessible from 965 destinations in over 160 countries. Transfers from Belfast City airport are also available as are transfers from Belfast Railway Station and transfers are available upon request from Dublin (supplements will apply).

## Accommodation Options

We have a range of accommodation options available for you ranging from Self-catering apartments right through to prestigious 5\* hotels. There should be accommodation available to suit all tastes and budgets. To remind you, in order that you have access to the airport transfers and daily transport shuttle service that accommodation should be booked through Sportworks UK. If you chose to arrange your own accommodation you will be charged a premium rate for access to the daily shuttle service and airport transfers.

## Location Map





Exploded view of the City Centre and the hotels relative to it.

## **Hotel Options and Rates**

HOTEL	Category	Price Single Room per night (£)	Price Double/ Twin room per person, per night. (£)
Holiday Inn Belfast	4*	129.00	84.50
Express by Holiday Inn Belfast	3*	105.00	66.50
Jurys Inn	3*	135.00	86.50
Wellington Park Hotel	4*	128.00	89.50
Days Hotel	3*	103.00	69.00
Europa Hotel	4*	100.00	75.00
Stormont Hotel	4*	96.00	74.00
Hilton Templepatrick	4*	130.00	82.50
Premier Inn (Alfred Street) *	3*	112.50	75.00
Premier Inn (Waring Street) *	3*	112.50	75.00
Park Avenue Hotel	3*	119.00	84.50
Tara Lodge	4*	100.00	72.50
Clarion Carrickfergus *	3*	85.00	65.00
Comfort Hotel Antrim	3*	99.00	69.50
Lansdowne Hotel	3*	85.00	62.50
Express by Holiday Inn Antrim	3*	90.00	60.00

\* Triple and Quad occupancy are available in the Premier Inn Albert Street, and Premier Inn Waring Street. Triple options are also available at the Clarion Hotel. Please contact us for prices for these rooms. We also have access to a number of multi occupancy options that are available – you will need to contact us directly for these and they are only available on a first come first served basis.

**Note:** Please refer to the Accommodation pages below for detailed hotel information. Ensure that you complete all the necessary forms by the specified dates and make full payment for accommodation, transport and entry fees by: 27th February 2009.

**IF YOU WOULD LIKE US TO HELP SOURCE ALTERNATIVE OPTIONS FOR YOU THEN PLEASE DO LET US KNOW – WE ARE HERE TO HELP YOU AND YOUR TEAM.**

### **HOLIDAY INN BELFAST**



The Holiday Inn Belfast is a modern 4 star property located in the heart of the city with the main business districts, tourist attractions, Odyssey, Waterfront Hall and shopping areas just a few minutes walk away. The Hotel combines an excellent range of facilities. Wireless Internet is available in public areas for a small charge. Spirit Health and Leisure Club offers a gym and a large indoor heated swimming pool complimented by Spa and Beauty Therapists. The Hotel Restaurant, Lounge

and Bar offer dishes from around the world including local specialities.

**Distance from Belfast City Airport: 3.5 miles – 15 minutes**

**Distance from Belfast International Airport: 16 miles – 35 minutes**

**Distance to Venue: 8.5 miles – 20 minutes**

### EXPRESS BY HOLIDAY INN



The Express by Holiday Inn is a 3 star hotel situated within the University Quarter of Belfast City. Fresh, clean and uncomplicated, Express by Holiday Inn offers good quality accommodation and surroundings. The hotel is within walking distance of the city's shops, restaurants, bars and clubs and all the major tourist attractions.

**Distance from Belfast City Airport: 3.7 miles – 15 minutes**

**Distance from Belfast International Airport: 16 miles – 35 minutes**

**Distance to Venue: 8.5 miles – 20 minutes**

### JURYS INN



Located in the centre of Belfast alongside Belfast Opera House, Jurys Inn is one of the most popular Belfast Hotels. This 3 star is within easy walking distance of a selection of restaurant, bars and city attractions.

**Distance from Belfast City Airport: 4 miles – 20 minutes**

**Distance from Belfast International Airport: 16 miles – 40 minutes**

**Distance to Venue: 8.5 miles – 20 minutes**

### WELLINGTON PARK



Offering the largest ground floor lounge in Belfast, the Wellington Park hotel offers you a comfortable base to allow you to enjoy your stay in Belfast. Surrounded by an international array of bistros and restaurants, the hotel is situated minutes away from the attractions that Belfast has to offer.

**Distance from Belfast City Airport: 7 miles – 25 minutes**

**Distance from Belfast International Airport: 16 miles – 40 minutes**

**Distance to Venue: 11 miles – 30 minutes**

### DAYS HOTEL



The Days Hotel is the largest hotel in Belfast, with 250 en suite bedrooms. It offers guests good value accommodation and is located right in the heart of Belfast City. The main shopping, business and entertainment districts are right on the doorstep. Belfast's major attractions including The Grand Opera House, City Hall, Waterfront Hall and Odyssey Arena are within 5 minutes of the hotel.

**Distance from Belfast City Airport: 4 miles – 20 minutes**

**Distance from Belfast International Airport: 16 miles – 40 minutes**

**Distance to Venue: 8.5 miles – 20 minutes**

For up to date information log on to [www.worldfencing2009.com](http://www.worldfencing2009.com) or email us at [info@worldfencing2009.com](mailto:info@worldfencing2009.com)

## EUROPA HOTEL



Superbly located in the heart of Belfast City Centre is the 4 star Europa Hotel. Step into the spacious grand foyer and you'll instantly feel a special warm welcome. Having undergone major refurbishment the hotel now boasts 240 exquisite bedrooms, making it one of Northern Ireland's largest hotels, and the preferred choice of Prime Ministers, Presidents and many celebrities on their visit to Belfast. The hotel is surrounded by shops, bars, museums and entertainment, and ideally positioned next door to the famous Grand Opera House and close to the Waterfront and Odyssey concert venues. This cosmopolitan hotel offers spacious elegance, luxury and style, proven by the fact that the Europa was the choice of President Clinton during his visits to Belfast in 1995 and 1998.

**Distance from Belfast City Airport: 4 miles – 20 minutes**

**Distance from Belfast International Airport: 16 miles – 40 minutes**

**Distance to Venue: 8.5 miles – 20 minutes**

## STORMONT HOTEL



Situated in the leafy suburbs of Belfast, overlooking the landscaped gardens of Stormont Castle, the Stormont Hotel is only four miles from Belfast City Centre. The hotel is a convenient 15 minute drive from major motorways, and air, ferry and rail terminals. Guests can enjoy contemporary dining in Shiraz Restaurant or the cosmopolitan atmosphere of La Scala bistro, or simply relax in the stylish lounge and reception area by the log burning fire. Guests can make use of the fitness suite within the hotel or enjoy complimentary use of the David Lloyd Centre nearby.

**Distance from Belfast City Airport: 3 miles – 15 minutes**

**Distance from Belfast International Airport: 19 miles – 45 minutes**

**Distance to Venue: 10 miles – 25 minutes**

## HILTON TEMPLEPATRICK



Located a short distance from Belfast International Airport, the Hilton Templepatrick Hotel and Country Club offers an array of facilities to make your stay a good one. The hotel has a leisure club, including swimming pool and sauna, tennis courts and golf course. A restaurant and bar will keep you well fed and watered.

**Distance from Belfast City Airport: 16 miles – 35 minutes**

**Distance from Belfast International Airport: 11 miles – 25 minutes**

**Distance to Venue: 15 miles – 35 minutes**

## PREMIER INN

Located right in the heart of Belfast City, Premier Inn offer two premises for your stay., a mere ½ mile apart. Both premises offer the same facilities, with good quality bedrooms, and ample lounge and dining space. Wireless internet is available in the public areas for a small charge.

**Distance from Belfast City Airport: 3 miles – 15 minutes**

**Distance from Belfast International Airport: 16 miles – 35 minutes**

**Distance to Venue: 8 miles – 20 minutes**

## PARK AVENUE HOTEL



The Park Avenue Hotel is the closest hotel to Belfast City Airport. The hotel is only ten minutes from the heart of the city. Close to the Odyssey Arena, Belfast's Waterfront Hall and the Titanic Quarter, it is one of the most popular hotels in Belfast. Officially designated three stars, a recent refurbishment would certainly warrant four-star status.

**Distance from Belfast City Airport: 1 mile – 5 minutes**

**Distance from Belfast International Airport: 17 miles – 40 minutes**

**Distance to Venue: 8.5 miles – 20 minutes**

## TARA LODGE



Located in the University district of Belfast, the Tara Lodge is convenient for walking into the city centre where you will find numerous restaurants, bars and attractions. All bedrooms are fitted out to a very high standard.

**Distance from Belfast City Airport: 4 miles – 20 minutes**

**Distance from Belfast International Airport: 20 miles – 45 minutes**

**Distance to Venue: 8 miles – 20 minutes**

## CLARION HOTEL, CARRICKFERGUS



Ideally situated for the venue, only 3 miles from Jordanstown Campus. The hotel offers all ensuite bedrooms and a restaurant / bar. The hotel is not situated in the city of Belfast, however an efficient public transport system operates daily should you want to visit Belfast during your stay.

**Distance from Belfast City Airport: 13 miles – 35 minutes**

**Distance from Belfast International Airport: 20 miles – 45 minutes**

**Distance to Venue: 3 miles – 10 minutes**

## COMFORT HOTEL, ANTRIM



The Comfort Hotel offers luxury accommodation throughout, along with complimentary WiFi. The hotel has its own restaurant, and other restaurants can be found locally within 10 minutes walk. It is situated next to Irelands largest international shopping outlet.

**Distance from Belfast City Airport: 22 miles – 45 minutes**

**Distance from Belfast International Airport: 6 miles – 15 minutes**

**Distance to Venue: 19 miles – 40 minutes**

## LANSDOWNE HOTEL

The luxurious privately owned Lansdowne Hotel is situated in the picturesque Cave Hill area of Belfast, just 3 miles from Belfast City Centre. All bedrooms are ensuite, and a restaurant is located onsite.

**Distance from Belfast City Airport: 8 miles – 25 minutes**

**Distance from Belfast International Airport: 14 miles – 35 minutes**

**Distance to Venue: 6 miles – 15 minutes**

## EXPRESS BY HOLIDAY INN, ANTRIM



This hotel in Antrim has stylish but simply decorated bedrooms, all with Sky TV, tea/coffee making facilities, power showers, broadband internet (supplement payable locally) and desktop workspace. The hotel prides itself on its vibrant friendly approach. Every guest is made to feel at home as soon as they walk through the door. It is situated next to Irelands largest international shopping outlet.

**Distance from Belfast City Airport: 22 miles – 45 minutes**

**Distance from Belfast International Airport: 6 miles – 15 minutes**

**Distance to Venue: 19 miles – 40 minutes**

(All of the above timings are approximate and are dependant on local conditions)

## What You Get For Your Money

- Accommodation on bed and breakfast basis plus use of facilities at your hotel of choice (some supplements may apply).
- Transport to and from Belfast International and Belfast City Airports will be available everyday from the 2<sup>nd</sup> April through to the 14<sup>th</sup> April. For transfers on other days, please contact Sportworks UK, and they will provide you with a price for this (please contact Stephen). A mandatory supplement is payable for arrival and departure transfers and this is shown on the booking forms below.
- Daily transport to and from the competition venue.
- Dedicated Onsite liaison to coordinate accommodation and transport and to provide ongoing support throughout your stay.
- VAT, and Taxes included where applicable.

**Please Note: accommodation will be allocated on a first come first served basis.**

For up to date information log on to [www.worldfencing2009.com](http://www.worldfencing2009.com) or email us at [info@worldfencing2009.com](mailto:info@worldfencing2009.com)

## Accommodation Booking Form

Please complete the following accommodation booking form fully to ensure your accommodation and transport requirements are met. Please note: Rates include bed, breakfast, all taxes and access to and use of the accommodation facilities, as detailed on the hotel information sheets (some supplements may apply).

### Personal Details

<b>Federation:</b>			
<b>Contact Name:</b>		<b>Country:</b>	
<b>Invoice Address:</b>			
<b>Telephone No.</b>		<b>Fax No.</b>	
<b>Email Address:</b>			

### About your travel plans

Arrival Date	Departure Date	No. Of People

### Your accommodation requirements?

Please complete your hotel choice the number of people, nights, room type, rate and the total amount payable. All prices are in GBP – Great Britain Pounds.

<b>Hotel/s Name:</b>							
<b>Single Rooms:</b>							
No. Of People		X No. Of Nights		X Rate	£	= Total	£
<b>Double Rooms:</b>							
No. Of People		X No. Of Nights		X Rate	£	= Total	£
<b>Twin Rooms:</b>							
No. Of People		X No. Of Nights		X Rate	£	= Total	£
<b>Airport Transfers:</b>							
No. Of People				X Rate	£17.50	= Total	£
						<b>Grand Total</b>	£

**NOTE: Accommodation Must Be Booked, Confirmed and Paid for On Or Before The 27th February 2009.**

## DIETARY REQUIREMENTS

If any member of the team has any special dietary requirements, please use the space below to let us know. Include their name along with details of their requirements.

## OTHER INFORMATION

Please use this space to provide information relating to any other special requirements or anything else you think we should know that will help us ensure that your stay in Belfast is as enjoyable as possible.

## Entry Fees

Type	Number of Persons/Teams		Cost (€)		Total
Per Individual		X	€55.00	=	€
Per Team		X	€140.00	=	€
				=	
<b>TOTAL ENTRY FEES</b>			<b>TOTAL</b>	=	€

## Payment Policy & Related Information

**\*Separate invoices will be sent for Entry Fees and Accommodation** – this enables us to collect the entry fees in Euro's and the Accommodation etc in GBP.

The **total amount payable** is required to confirm your entry and accommodation reservations.

In the event of cancellation though, receipt of your completed booking form will be taken as confirmation of your booking. All bookings must be confirmed and paid for by 27<sup>th</sup> February 2009. Accommodation cannot be guaranteed after this date. **All balance payments are due by the 27<sup>th</sup> February 2009.** Accommodation cannot be guaranteed, nor at the above quoted rates beyond this deadline.

An invoice for the full amount due will be issued following receipt of your booking form, it will show the deposit due and payment details and options and the balance due, and when it is due by. All monies due must be paid in accordance with this policy. Bank charges must be paid by the federation.

Our preferred currency for payment is GBP. However, payment can be made in Euros, Swiss Francs and USD. If you choose to pay your fees in any other currency than GBP then Foreign Exchange rates will be available on request, as will alternative banking details.

Payment can be made by Direct Bank Transfer, or by Credit/Debit Card. Cash will not be accepted as a form of payment. Payment will not be accepted upon arrival in Belfast. If you arrive in Belfast without having paid your entry, and accommodation fees you will be excluded from the competition.

## Cancellation Policy – Hotels Only

Notification on or prior to the 27 <sup>th</sup> February 2009	50% refund of total accommodation cost. Entry Fees are not refundable.
From 28th February 2009	No refunds available.
<b>Note: Any and all damage caused to hotel property or facilities is the responsibility of individuals and or teams and must be paid for in full prior to departure.</b>	

**Payment Methods – this information will be included with the invoice that will be sent upon receipt of your entry and booking forms.**

**Bank Transfer to:  
Bank:**

**Account No.  
Sort code:  
Swift:  
IBAN:**

**Reference:** FENCING2009 – BELFAST – then your team/individual name

Note: Bank transfer fees are the responsibility of the sender.

**Credit/Debit Card Payment**

**Name of Card Holder:** \_\_\_\_\_

**Credit Card Number:** \_\_\_\_\_

**Debit Card Number:** \_\_\_\_\_

**Start Date:** \_\_\_\_\_ **Expiry Date:** \_\_\_\_\_

**Issue Number:** \_\_\_\_\_

**Last three digits from the signature strip number:** \_\_\_\_\_

**Signature of the Card Holder:** \_\_\_\_\_

All major credit cards accepted as a method of payment, however a 2.5% surcharge will be applied to your total booking cost should you choose to pay by VISA or MasterCard. Amex is charged at 4% but there is no charge for the use of Debit Cards. We do not accept Diners Club.

## Transportation Forms

For those travelling by air, transportation can be arranged for arrivals at Belfast International and Belfast City Airports (all pick-ups from the Information Desk in the Arrivals Hall).

Being an IATA licensed travel agent we are able to arrange flights from any departure point in the world. If you would like us to arrange your travel for you contact Stephen Minto at [Stephen@sportworksuk.com](mailto:Stephen@sportworksuk.com) for a no obligation quote.

If you are travelling by car or any other means, then please let us know. This information should be provided on the Accommodation Booking Form in the 'Other Information' space provided. Transport can be arranged from rail stations and Dublin but supplements will apply. Ask for details.

Please complete the following forms fully to ensure your transport requirements are met.

### ARRIVALS

**Please return this form, along with the departure form and accommodation booking form to Stephen Minto at the address below or by email (insert 'CJWFC 2009' in the subject field) by the 27<sup>th</sup> February 2009).**

Team or Individual Name \_\_\_\_\_

Arrival Point  
(Please tick)

Belfast International

Belfast City

Number of Passengers \_\_\_\_\_

Number of fencing bags \_\_\_\_\_

Date and Time of Arrival \_\_\_\_\_

Flight Number \_\_\_\_\_

Terminal \_\_\_\_\_

Flight Origin \_\_\_\_\_

**Please note:** airport transfers are available everyday from the 2<sup>nd</sup> April through to the 14<sup>th</sup> April, but you need to complete this form to ensure that your transfers are booked.

## DEPARTURES

Please return this form, along with the arrivals form and accommodation booking form to Stephen Minto at the address below or by email (insert CJWFC 2009 in the subject field) by the 27<sup>th</sup> February 2009.

Team or Individual Name \_\_\_\_\_

Departure Point  
(Please tick)

Belfast International

Belfast City

Number of Passengers \_\_\_\_\_

Number of fencing bags \_\_\_\_\_

Date and Time of Departure \_\_\_\_\_

Terminal \_\_\_\_\_

Flight Number \_\_\_\_\_

**Please note: airport transfers are available everyday from the 2<sup>nd</sup> April through to the 14<sup>th</sup> April, but you need to complete this form to ensure that your transfers are booked.**

Where teams depart on separate flights, please complete one form for each departure.

**All Hotel Booking, Entry Fee and Transport Forms to be sent to:**

**Mr. Stephen Minto  
Sportworks UK**

t. +44 (0) 1629 706579  
f. +44 (0) 1629 734893  
e. [stephen@sportworksuk.com](mailto:stephen@sportworksuk.com)  
w. [www.sportworksuk.com](http://www.sportworksuk.com)

## Local Transport

Transfers to and from the airport (supplement payable – see above) and to and from your chosen hotel will be organised and provided by Sportworks UK. Further details will be distributed via the official event website in due course.

Daily transport to and from the competition venue will be provided and will again be organised by Sportworks UK. A timetable will be produced in accordance with the competition schedule and will be published via the official event website in due course.

A detailed travel and event guide will be produced nearer to the start of the event and will be distributed to all participants via email prior to travel for Belfast. It will also be available on the event website.

## VISA's

For all Visa enquiries you should contact the relevant authorities in your country of origin. Official Invitation letters will be provided if needed.

**Entry requirements for Americans:** US travellers must hold a valid passport; a visa is not required. UK Immigration officials will decide on length of stay up to six months depending on reason for travel.

**Entry requirements for Canadians:** Canadian nationals must hold a valid passport; a visa is not required. UK Immigration officials will decide on length of stay up to six months depending on reason for travel.

**Entry requirements for Australians:** Australian nationals must hold a valid passport; a visa is not required. UK Immigration officials will decide on length of stay up to six months depending on reason for travel.

**Entry requirements for South Africans:** South Africans require a valid passport. A visa is not required. UK Immigration officials will decide on length of stay up to six months depending on reason for travel. South Africans may no longer travel to the UK on a temporary passport.

**Entry requirements for Irish nationals:** Irish nationals do not require a visa or a passport to enter the UK, but if travelling from a country other than Ireland, the Channel Islands, the Isle of Man, then a passport is required.

**Entry requirements for New Zealand nationals:** New Zealand nationals must hold a valid passport, but no visa is required. UK Immigration officials will decide on length of stay up to six months depending on reason for travel.

**Passport/Visa Note:** If a visa is not required, travellers should hold a return or onward ticket, or proof of funds for the duration of stay. Passports must be valid for the period of intended stay in the UK; nationals of the EU require a passport valid on arrival. All nationals of non-EEA member states travelling to the UK for more than six months require an Entry Clearance visa.

**Embassy or Consulate in US:** British Embassy, Washington DC, United States: +1 202 588 6500.

**Embassy or Consulate in Canada:** British High Commission, Ottawa, Canada: +1 613 237 1530.

**Embassy or Consulate in Australia:** British High Commission, Canberra, Australia: +61 (0)2 6270 6666.

**Embassy or Consulate in South Africa:** British High Commission, Pretoria, South Africa: +27 (0)12 421 7500.

**US Embassy or Consulate:** United States Embassy, London: +44 (0)20 7499 9000.

**Canadian Embassy or Consulate:** Canadian High Commission, London: +44 (0)20 7258 6600.

**Australian Embassy or Consulate:** Australian High Commission, London: +44 (0)20 7379 4334.

**South African Embassy or Consulate:** South African High Commission, London: +44 (0)20 7451 7299.

**For further information specific for your Country please visit the following website:**

[www.ukvisas.gov.uk/](http://www.ukvisas.gov.uk/)

## Sightseeing

It is intended to organise sightseeing visits during the World Championships to allow everyone the opportunity to see more of Northern Ireland. Two of the more famous attractions, Giants Causeway and Bush Mills, will be included, as well as the possibility of visiting Samson and Goliath, the giant cranes that reside at the dockyard where the Titanic was built. Information about proposed sightseeing trips will be available upon your arrival in Belfast.



Giant's Causeway's bizarre rock formation is the subject of many a legend. According to the most popular, scary giant Fionn McCumhaill (Finn McCool) fell in love with a Scottish belle and created some steps to reach her. Another says he built them to fight a rival Scottish giant. According to this tale, McCumhaill discovered his rival was huge and so went back home with the Scottish giant in pursuit. However, when the Scottish giant arrived he found McCumhaill dressed as a baby in a crib and fled back to Scotland, ripping up the causeway - he thought that if Fionn's baby was this big, how big would its father be! The thinking of geologists has now replaced folklore, and the high basalt columns that disappear into the sea are known to have been created by volcanic eruptions and cooling lava rather than a broken heart or raging head. The result is about two

miles of 40,000 basalt columns strewn along the coast - most with six sides, but many with four, five, seven or eight. Some reach 40 feet high, although taller ones exist beneath the water surface. Up until 1830, the journey to this crazy place was hazardous to say the least. Thankfully a road was built along the coast and in 1608 Bushmills, a distillery, was built to provide the weary traveller with a magnum of whiskey. This is still going strong as a tradition - a useful bracer against the harsher elements Antrim suffers outside of the summer months. The visitor centre contains interpretative displays, an audiovisual theatre and a tourist information centre, and there is also a shop and café.

## Belfast Basics

**Time:** Local time is GMT (GMT +1 from last Sunday in March to Saturday before last Sunday in October)

**Electricity:** 240 volts, 50Hz. Flat three-pin plugs are standard

**Money:** The currency is the pound (GBP), which is divided into 100 pence. ATMs are available in all towns and Visa, MasterCard and American Express are widely accepted; visitors with other cards should check with their credit card companies in advance. Foreign currency can be exchanged at bureaux de change and large hotels, however better exchange rates are likely to be found at banks. Travellers cheques are accepted in all areas frequented by tourists; they are best taken in Pounds Sterling to avoid additional charges.

**Language:** English is the official language, though visitors will be astonished by the variety of regional accents.

**Health:** There are no specific health risks associated with travel to the UK and food and water can be considered safe. The British National Health Service is excellent; emergency treatment is free to visitors, but charges are made for routine medical care. A number of countries have reciprocal health agreements with the UK including Australia, New Zealand and EU countries. Visitors from other countries (including Canada, South Africa and the US) are advised to take out good medical insurance.

**Tipping:** Tips of 10 to 15% are expected in restaurants and upmarket hotels if a service charge hasn't been included. Hotel service staff receive an optional amount. Taxi drivers are usually given 10 to 15% of the fare. Other services are discretionary.

**Safety:** It is generally safe to travel throughout the UK. Security at all UK airports has been tightened and restrictions on hand luggage introduced; security has been increased at transport hubs throughout the country.

**Customs:** Handshaking is customary when introduced to someone new. Smoking is banned in all enclosed public spaces, including pubs and restaurants, and on public transport. The ban is in effect in Northern Ireland. There is a strict etiquette on escalators - stand on the right, walk on the left.

**Business:** The four countries of the United Kingdom, although culturally and historically different, generally keep to the same practices in business. Politeness and punctuality are key to good business relations, and initial meetings are often conducted formally and impersonally, becoming more open and social as things progress. Business cards are exchanged at introductions. Dress is formal, with dark suits preferred. Business hours are generally 8am to 5pm Monday to Friday with an hour taken at lunch.

For up to date information log on to [www.worldfencing2009.com](http://www.worldfencing2009.com) or email us at [info@worldfencing2009.com](mailto:info@worldfencing2009.com)

**Restaurants:** A wide variety of restaurants are available in Belfast to suit all tastes and budgets. Below are a sample of those:

- Bo Tree (Thai) – University Road
- Red Panda (Asian) – Great Victoria Street
- Harry Ramsdens (Family Friendly) – York Street
- Soda Joe's American Diner (Family Friendly) – Odyssey Pavillion
- Beatrice Kennedy (Fine Dining) – University Road
- Deanes Restaurant and Bar (Fine Dining) – Howard Street
- Arc Brasserie (Modern Irish) – Waterfront Hall
- Cafe Renoir Bistro and Pizzeria (Modern Irish) – Botanic Avenue
- Wellie Bar and Grill (Modern Irish) – Malone Road
- The Kings Head (Gastropub) – Lisburn Road
- Robinsons (Gastropub) – Great Victoria Street
- Moghul Restaurant (Indian) – Botanic Avenue
- Mourne Seafood Bar (Seafood) – Bank Street

(Sportworks UK does not take any responsibility for the quality of the food. Recommendations are based on the experience of having dined in the above establishments).

**Communications:** The international country dialling code for UK is +44. The outgoing code is 00, or 048 for Northern Ireland, followed by the relevant country code (e.g. 001 for the United States). There is a wide range of city/area codes in use. Mobile phones work throughout the country; the network operators use GSM 1800 networks, which may not be compatible with some dual-band US cell phones. Internet cafes are available in major towns and cities, train stations and airports.

**Duty free:** Travellers to the United Kingdom over 16 years with goods purchased in the EU for personal consumption do not have to pay duty on these goods provided they are for personal use or are gifts for family and friends. This does not apply to large quantities of alcohol or tobacco if the amounts exceed the following limits: 3,200 cigarettes, 400 cigarillos (up to 3g each), 200 cigars, and 3kg pipe or cigarette tobacco; 10 litres spirits with alcohol content higher than 22%, 20 litres alcohol less than 22% alcohol volume, 90 litres of wine (with no more than 60 litres sparkling wine) and 110 litres beer. Travellers to the United Kingdom over 17 years arriving from non-EU countries (including the Channel Islands and Gibraltar) do not have to pay duty on the following items: 200 cigarettes, or 100 cigarillos (up to 3g each), or 50 cigars, or 250g tobacco; 1 litre spirits with alcohol content higher than 22%, or 2 litres dessert wine not exceeding 22% alcohol volume and sparkling wine, and 2 litres of table wine; perfume up to 60cc or 250ml eau de toilette; and goods such as souvenirs to the value of £145. The import of firearms must be accompanied by an appropriate license or certificate. All handguns are restricted under UK law and are only allowed on a BA aircraft with prior permission obtained from the Security Duty Manager. Prohibited items include indecent or obscene books, films or videos.

### Useful Contacts

In addition to those introduced in the above letter:

British Fencing Association - Tel 00 44 208 742 3032 or [headoffice@britishfencing.com](mailto:headoffice@britishfencing.com)

[www.britishfencing.com](http://www.britishfencing.com)

Keith Smith  
President